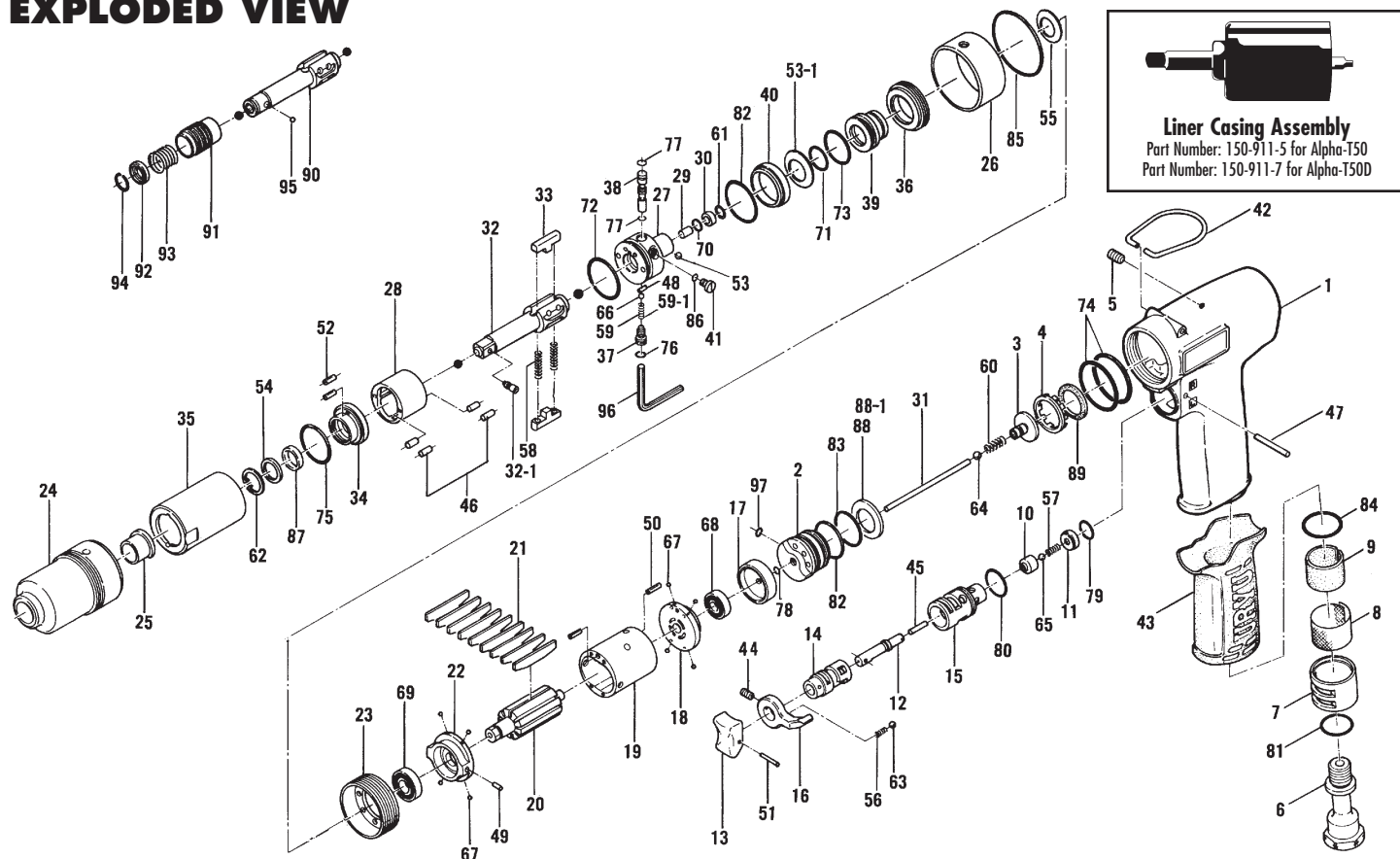


EXPLODED VIEW



PARTS LIST — FOR REFERENCE ONLY

Index Number	Part Number	Description	Qty.	Index Number	Part Number	Description	Qty.	Index Number	Part Number	Description	Qty.
1	150-025-5	Handle	1	35	150-905-5	Liner Casing	1	69	982-402-0	Ball Bearing (EE3)	1
2	150-253-5	Shut-off Valve Bushing	1	36	190-906-6	Liner Casing Setter	1	70	990-964-0	O-Ring (ARP568-008)	1
3	150-254-9	Shut-off Valve	1	37	150-907-5	Relief Valve Spindle	1	71	990-328-0	O-Ring (JW1530-15)	1
4	150-684-5	Cushion Spacer	1	38	150-970-7	Relief Valve	1	72	990-329-0	O-Ring (JW1530-19)	1
5	150-108-5	Valve Plug	1	39	150-972-5	Accumulator	1	73	990-331-0	O-Ring (JW1530-21)	1
6	173-091-0	Air Inlet Bushing	1	40	150-973-5	Liner Casing Spacer	1	74	990-337-0	O-Ring (JW1530-27)	2
7	173-780-0	Exhaust Stack	1	41	150-742-5	Oil Plug	1	75	990-605-0	O-Ring (25 x 1.45)	1
8	173-042-0	Silencer Net	1	42	010-790-1	Suspension Ring	1	76	990-625-0	O-Ring (5.5 x 3.5 x 1.0)	1
9	173-835-0	Filter (K-100)	1	43	150-842-5	Handle Cover	1	77	990-623-0	O-Ring (4.6 x 3.0 x 0.8)	2
10	174-100-8	Valve	1	44	952-106-0	Allen Head Dog Point Screw (M4 x 6)	1	78	990-900-0	O-Ring (SNS-2)	1
11	150-019-5	Valve Cover	1	45	969-412-0	Pin (G) (2 x 12)	1	79	990-911-0	O-Ring (SNS-12)	1
12	150-103-5	Valve Rod Bushing	1	46	970-130-0	Pin (2.45 x 4.5)	4	80	990-912-0	O-Ring (SNS-14)	1
13	177-107-5	Valve Lever	1	47	971-123-0	Pin (2 x 23)	1	81	990-916-0	O-Ring (SNS-18)	1
14	480-210-9	Reverse Valve	1	48	972-011-0	Roller Pin (1.5 x 4.8)	1	82	990-979-0	O-Ring (SNS-20)	2
15	174-211-8	Reverse Valve Bushing	1	49	973-006-0	Roll Pin (2 x 6)	1	83	990-919-0	O-Ring (SNS-22)	1
16	480-212-8	Reverse Lever	1	50	973-007-0	Roll Pin (2 x 7)	2	84	990-921-0	O-Ring (SNS-22.4)	1
17	150-291-5	Rear Plate Spacer	1	51	973-014-0	Roll Pin (2 x 14)	1	85	990-333-0	O-Ring (JW1530-23)	1
18	150-285-5	Rear Plate	1	52	973-040-0	Roll Pin (1.5 x 5)	2	86	990-323-0	O-Ring (ARP568-004)	1
19	150-286-5	Cylinder	1	53	150-064-5	Plug	1	87	995-512-0	Teflon Seal (ARI0400-P12GC)	1
20	150-287-5	Rotor	1	53-1	155-167-2	Plate Spring (609)	1	88	944-227-0	Supporting Ring (16 x 25.5 x 2) (Standard)	1
21	174-288-0	Blade	9	54	150-807-5	Spacer	1	88-1	944-226-0	Supporting Ring (16 x 25.5 x 2.1)	1
22	150-289-5	Front Plate	1	55	975-752-0	Adjusting Spacer (15 x 10 x T)	1	89	944-228-0	Supporting Ring (26 x 18 x 1.5)	1
23	177-036-5	Casing Connector	1	56	976-006-0	Spring (3 x 5) (0.4)	1	90	177-350-7	Driver Anvil	1 ■
24	152-439-6	Front Casing	1	57	976-229-0	Spring (3.2 x 13) (0.3)	1	91	011-351-1	Bit Sleeve	1 ■
25	190-328-6	Anvil Bushing	1	58	976-791-0	Spring (3.3 x 21) (0.4) WPC	2	92	011-352-1	Bit Spacer	1 ■
26	152-384-6	Hammer Casing Band	1	59	976-317-0	Spring (3 x 7.3) (0.4)	1	93	978-327-0	Spring (13.5 x 11)	1 ■
27	150-901-5	Rear Liner Plate	1	60	976-314-0	Spring (4.3 x 11) (0.4)	1	94	978-117-0	Snap Ring (11.7 x 1)	1 ■
28	177-902-5	Liner	1	61	978-090-0	Snap Ring (9 x 0.7)	1	95	981-002-0	Ball (1/8)	1 ■
29	150-546-5	Piston	1	62	979-317-0	Inner Snap Ring (IRTW-17)	1	59-1	976-393-0	Spring (3 x 7.3) (0.4) N5.5	1 ■
30	150-557-5	Piston Bushing	1	63	981-002-0	Ball (1/8)	1	97	990-901-0	O-Ring (SNS-3)	1
31	187-130-3	Piston Rod	1	64	981-003-0	Ball (5/32)	1				
32	891-307-1	Anvil (P)	1	65	981-155-0	Ball (3.5mm)	1				
32-1	891-300-1	Socket Pin Assembly	1	66	981-225-0	Ball (2.5mm)	1				
33	177-440-5	Driving Blade	2	67	981-045-0	Ball (1.5mm)	8				
34	150-904-5	Front Liner Plate	1	68	982-401-0	Ball Bearing (EE2)	1				

ACCESSORIES

96	939-109-0	Allen Wrench (2mm) (64 x 64)	1
----	-----------	------------------------------	---

FOOTNOTES

■ = parts for Alpha-T50D Driver Head

AIMCO also offers a complete line of standard & special adapters, bits, sockets and extensions.



AIMCO

When ordering spare parts, please specify tool type, part number and description.
 10000 SE PINE, PORTLAND, OR 97216
 503-254-6600 FAX 503-255-2615