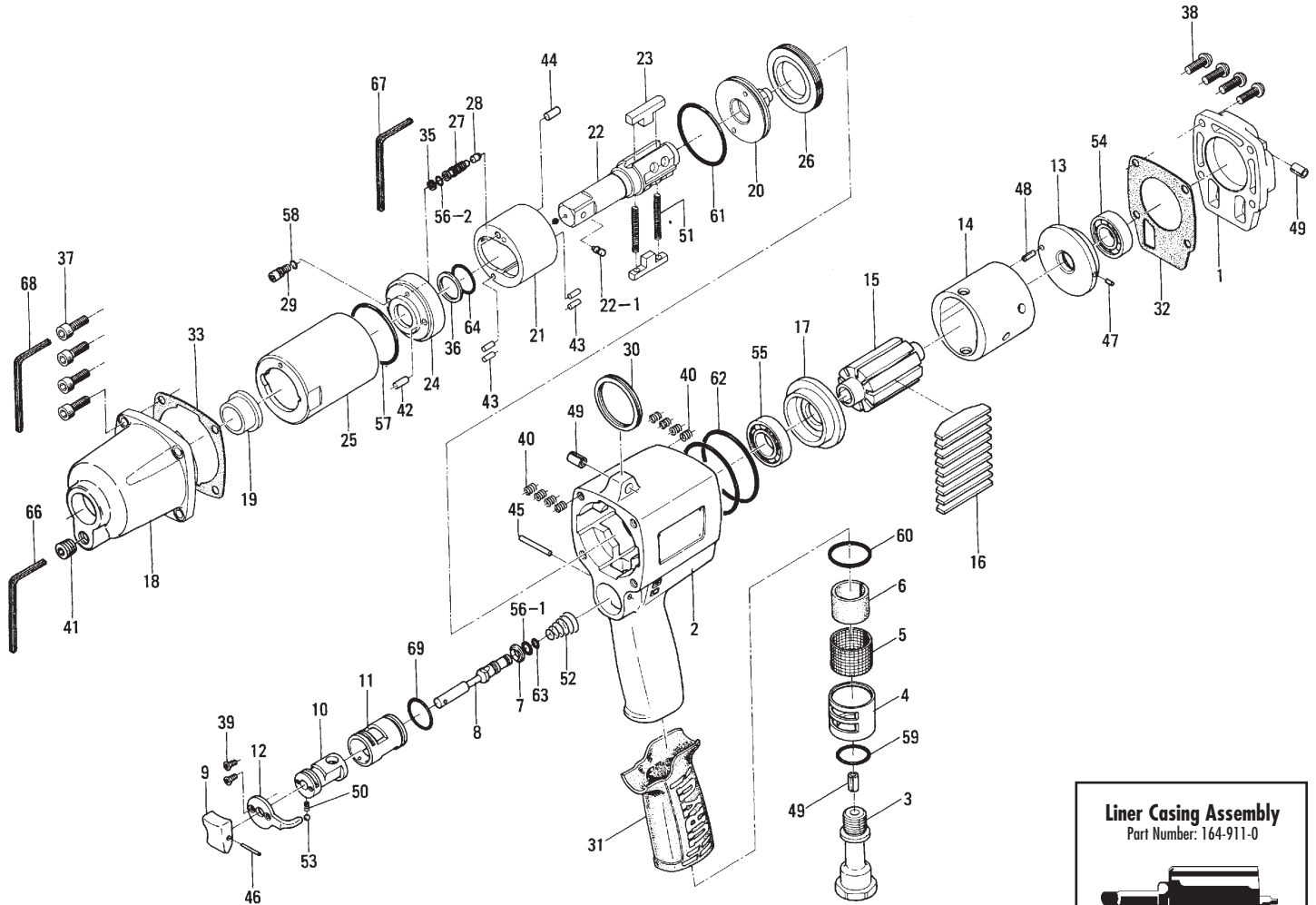
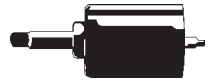


α ALPHA 70 OIL-PULSE TOOLS

EXPLODED VIEW



Liner Casing Assembly
Part Number: 164-911-0



PARTS LIST — FOR REFERENCE ONLY

Index Number	Part Number	Description	Qty.	Index Number	Part Number	Description	Qty.	Index Number	Part Number	Description	Qty.
1	194-012-0	Head Cover	1	24	194-904-0	Front Liner Plate	1	49	973-340-0	Roll Pin (6 x 10)	3
2	164-025-0	Handle	1	25	194-905-0	Liner Casing	1	50	976-006-0	Spring (3 x 5) (0.4)	1
3	173-091-0	Air Inlet Bushing	1	26	194-906-0	Liner Casing Setter	1	51	976-793-0	Spring (3.7 x 30) (0.45) WPC	2
4	173-780-0	Exhaust Stack	1	27	194-907-0	Relief Valve Spindle	1	52	977-160-0	Cone Spring (7.2 x 13 x 20)	1
5	173-042-0	Silencer	1	28	194-970-1	Relief Valve	1	53	981-002-0	Ball (1/8)	1
6	173-835-0	Filter	1	29	194-742-0	Oil Plug	1	54	982-402-0	Ball Bearing (EE-3)	1
7	173-100-0	Valve	1	30	004-790-2	Suspension Ring	1	55	982-903-0	Ball Bearing (6902)	1
8	173-104-0	Valve Rod	1	31	173-842-0	Handle Cover	1	56-1	990-002-0	O-Ring (P4)	1
9	177-107-5	Valve Lever	1	32	194-853-0	Head Cover Packing	1	56-2	990-320-0	O-Ring (ARP-568-003)	1
10	173-210-0	Reverse Valve	1	33	194-867-0	Front Casing Packing	1	57	990-334-0	O-Ring (JW1530-24)	1
11	173-211-0	Reverse Valve Bushing	1	35	944-002-0	Supporting Ring (2.6 x 4.5 x 1)	1	58	990-900-0	O-Ring (SNS-2)	1
12	173-212-0	Reverse Lever	1	36	944-013-0	Supporting Ring (P12)	1	59	990-916-0	O-Ring (SNS-18)	2
13	164-285-0	Rear Plate	1	37	945-117-0	Allen Head Bolt (M5 x 16)	4	60	990-921-0	O-Ring (SNS-22.4)	1
14	164-286-0	Cylinder	1	38	945-954-0	Hexagon Round Head Bolt (M5 x 16)	4	61	990-923-0	O-Ring (SNS-26)	1
15	164-287-0	Rotor	1	39	948-423-0	Allen Flush Head Screw (M3 x 6)	2	62	990-930-0	O-Ring (SNS-40)	2
16	164-288-0	Blade	9	40	965-011-0	Heli-Sert (M5 x 1.5D)	8	63	990-972-0	O-Ring (SNS-4) (NOK)	1
17	164-289-0	Front Plate	1	41	966-100-0	Allen Head (1/8)	1	64	990-152-0	O-Ring (P12) (NTN)	1
18	194-439-0	Front Casing	1	42	969-449-0	Pin (G) (3 x 6)	1	69	990-914-0	O-Ring (SNS-16)	1
19	190-328-6	Anvil Bushing	1	43	970-204-0	Pin (H) (3 x 6)	4				
20	194-901-0	Rear Liner Plate	1	44	970-310-0	Pin (H) (4 x 10)	1				
21	194-902-1	Liner	1	45	971-125-0	Pin (2 x 25)	1				
22	891-309-1	Anvil	1	46	973-014-0	Roll Pin (2 x 14)	1				
22-1	891-300-1	Socket Pin Assembly	1	47	973-066-0	Roll Pin (2.5 x 6)	1				
23	194-440-0	Driving Blade	2	48	973-068-0	Roll Pin (2.5 x 8)	1				

ACCESSORIES

66	939-104-0	Allen Wrench (5mm)	1
67	939-091-0	Allen Wrench (1.5mm) (80 x 20)	1
68	939-105-0	Allen Wrench (4mm)	1

FOOTNOTES

AIMCO also offers a complete line of standard & special adapters, bits, sockets and extensions.



AIMCO

When ordering spare parts, please specify tool type, part number and description.

10000 SE PINE, PORTLAND, OR 97216
503-254-6600 FAX 503-255-2615